

ROUTE 128/INTERSTATE 95
(NORTHBOUND)

INV. = 88.08
@ TOP OF SEDIMENT

SEE SHEET 1

MW

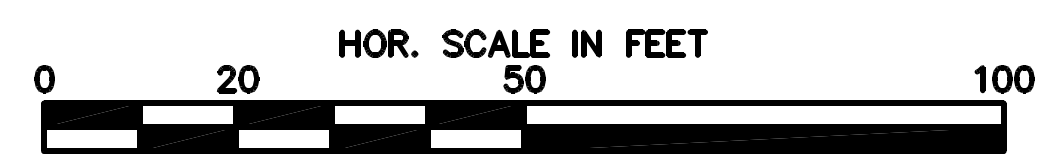
301-6
N/F
TOWN OF NEEDHAM
1916-261 EMINENT DOMAIN TAKING &
1969-336 QUITCLAIM DEED
AREA = 203,406 S.F.±
= 4.67 ACRES±

301-6
N/F
MOULTON REALTY TRUST
4322-266 & 4346-1
AREA = 6,811 S.F.±

TOWN LINE FOLLOWS THREAD OF CHARLES RIVER.
LINE DIGITIZED FROM MASSGIS ORTHOPHOTO.

NEEDHAM
DEDHAM

CHARLES RIVER



DATE	REVISIONS

NEEDHAM

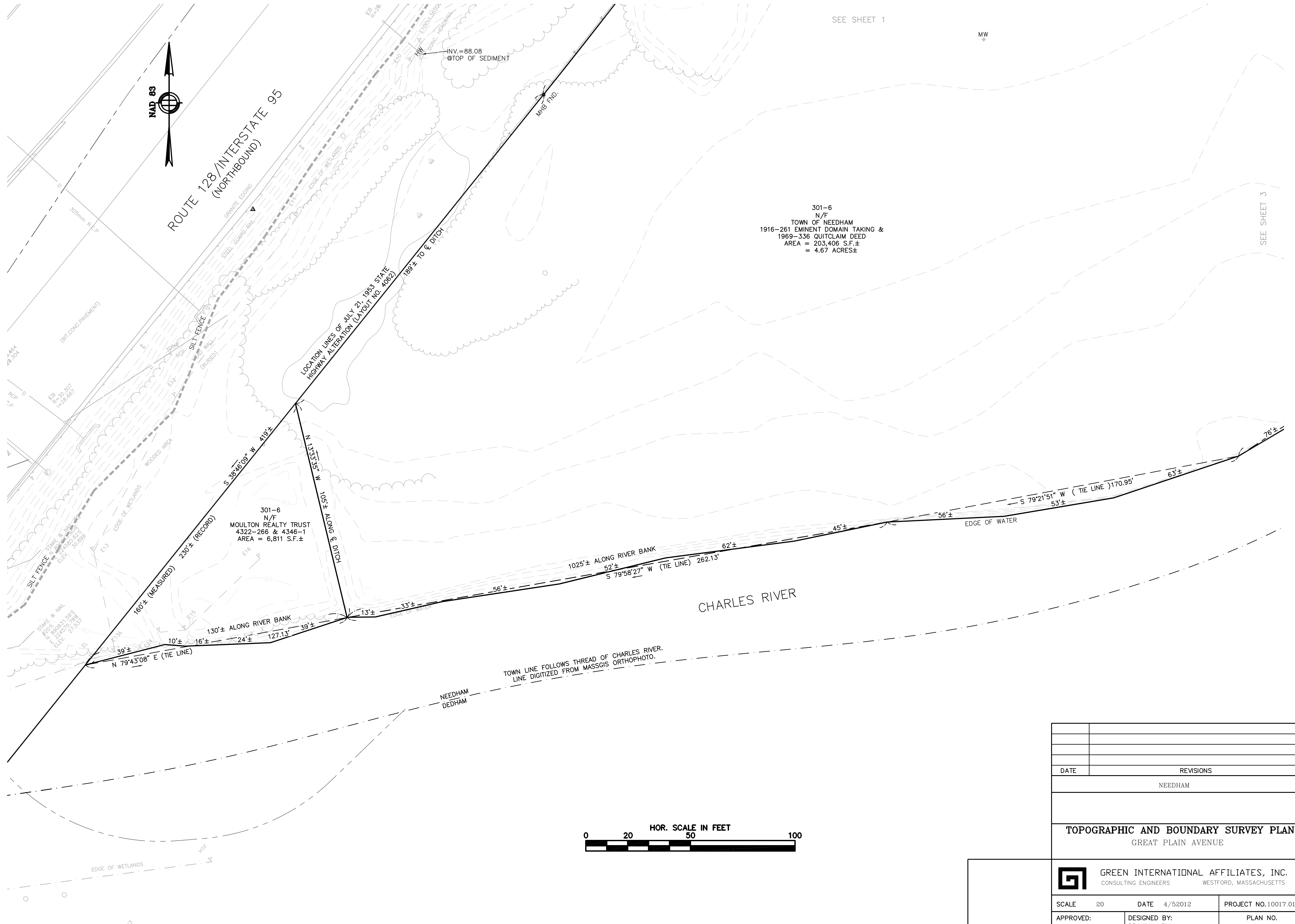
TOPOGRAPHIC AND BOUNDARY SURVEY PLAN
GREAT PLAIN AVENUE

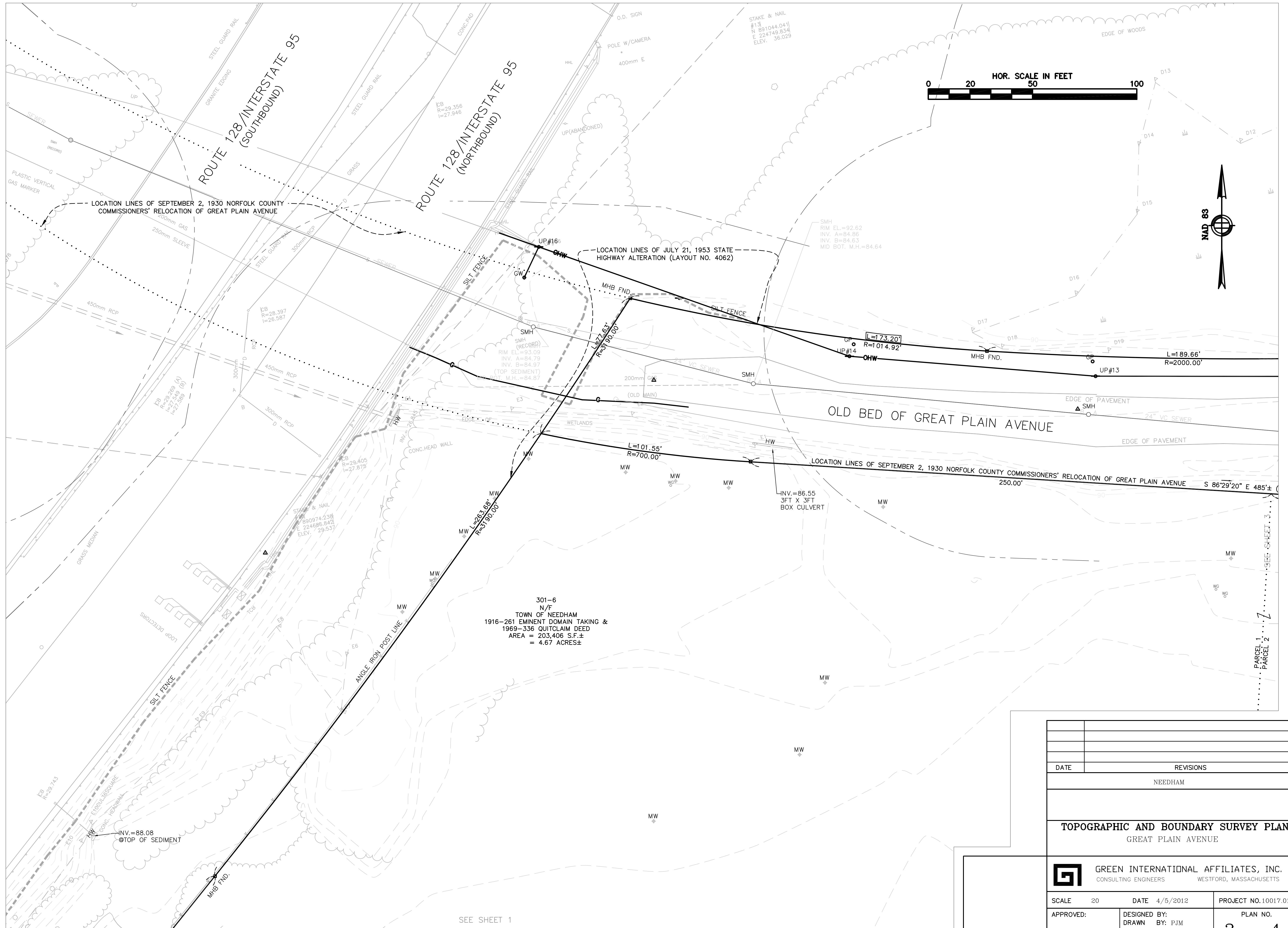
 **GREEN INTERNATIONAL AFFILIATES, INC.**
CONSULTING ENGINEERS WESTFORD, MASSACHUSETTS

SCALE 20 DATE 4/5/2012 PROJECT NO. 10017.016

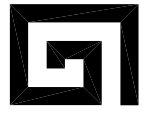
APPROVED: _____ DESIGNED BY: _____
DRAWN BY: PJM PLAN NO.
CHECKED BY: PAL 1 OF 4

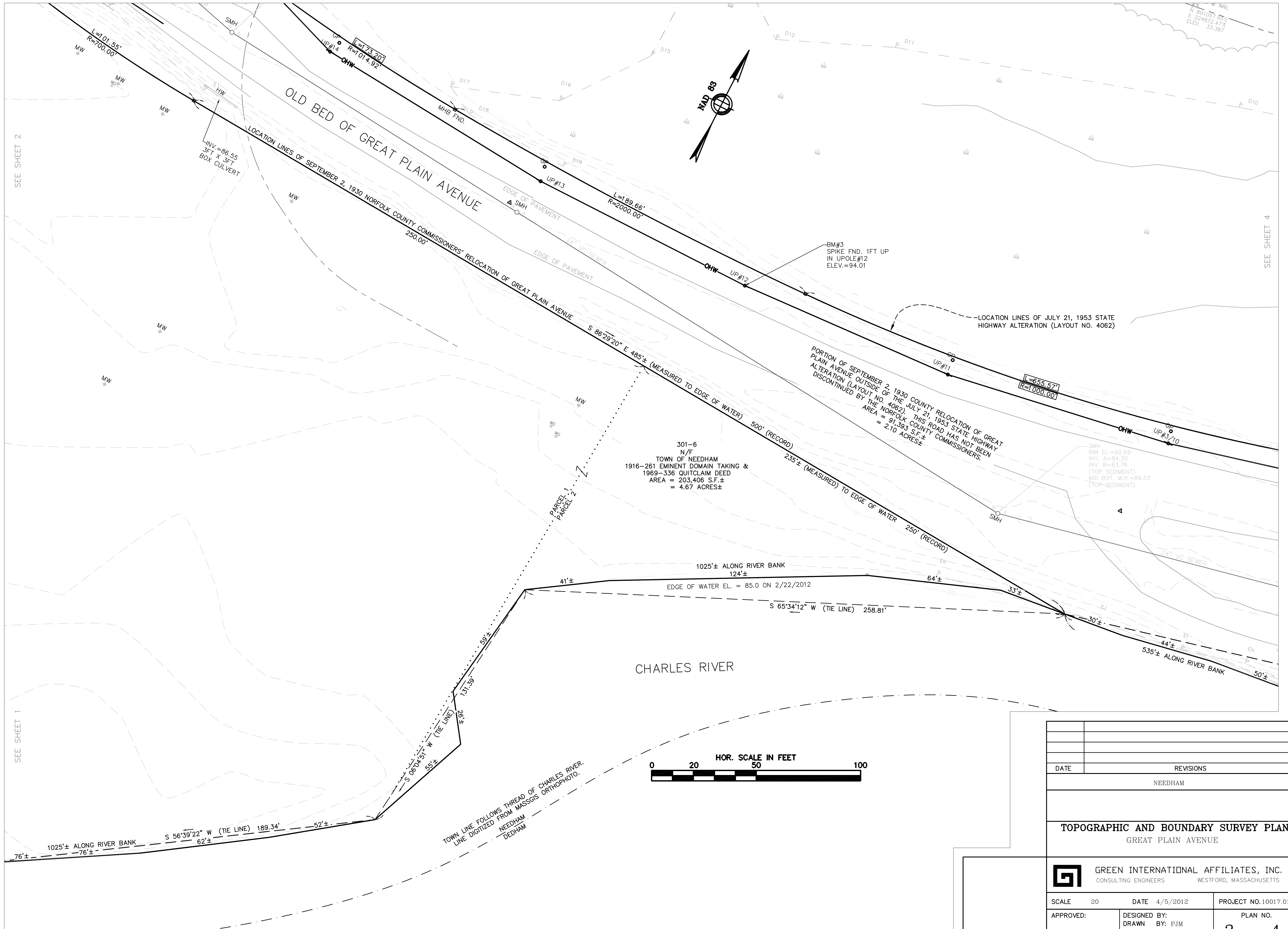
SEE SHEET 3





SEE SHEET 1

DATE		REVISIONS	
NEEDHAM			
TOPOGRAPHIC AND BOUNDARY SURVEY PLAN GREAT PLAIN AVENUE			
 GREEN INTERNATIONAL AFFILIATES, INC. CONSULTING ENGINEERS		WESTFORD, MASSACHUSETTS	
SCALE	20	DATE	4/5/2012
PROJECT NO.	10017.016	DESIGNED BY:	PJM
APPROVED:		DRAWN BY:	PJM
		CHECKED BY:	PAL
2		OF 4	



SEE SHEET 2

SEE SHEET 1

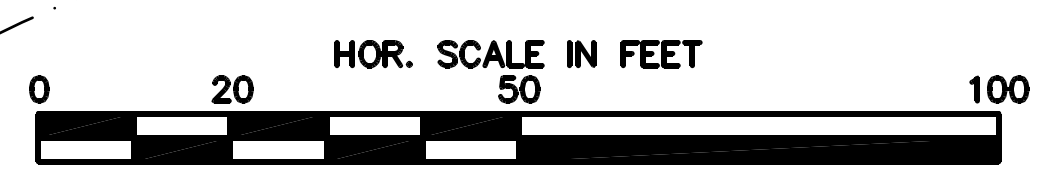
SEE SHEET 4

301-6
N/F
TOWN OF NEEDHAM
1916-261 EMINENT DOMAIN TAKING &
1969-336 QUITCLAIM DEED
AREA = 203,406 S.F.±
= 4.67 ACRES±

PORTION OF SEPTEMBER 2, 1930 COUNTY RELOCATION OF GREAT PLAIN AVENUE OUTSIDE OF THE JULY 21, 1953 STATE HIGHWAY ALTERATION (LAYOUT NO. 4062). THIS ROAD HAS NOT BEEN DISCONTINUED BY THE NORFOLK COUNTY COMMISSIONERS.
AREA = 91,393 S.F.±
= 2.10 ACRES±

SMH EL.=92.69
RM EL.=84.30
INV. A=84.30
INV. B=83.76
(TOP SEDIMENT)
MID BOT. M.H.=84.53
(TOP SEDIMENT)

TOWN LINE FOLLOWS THREAD OF CHARLES RIVER.
LINE DIGITIZED FROM MASSGIS ORTHOPHOTO.
NEEDHAM
DEDHAM



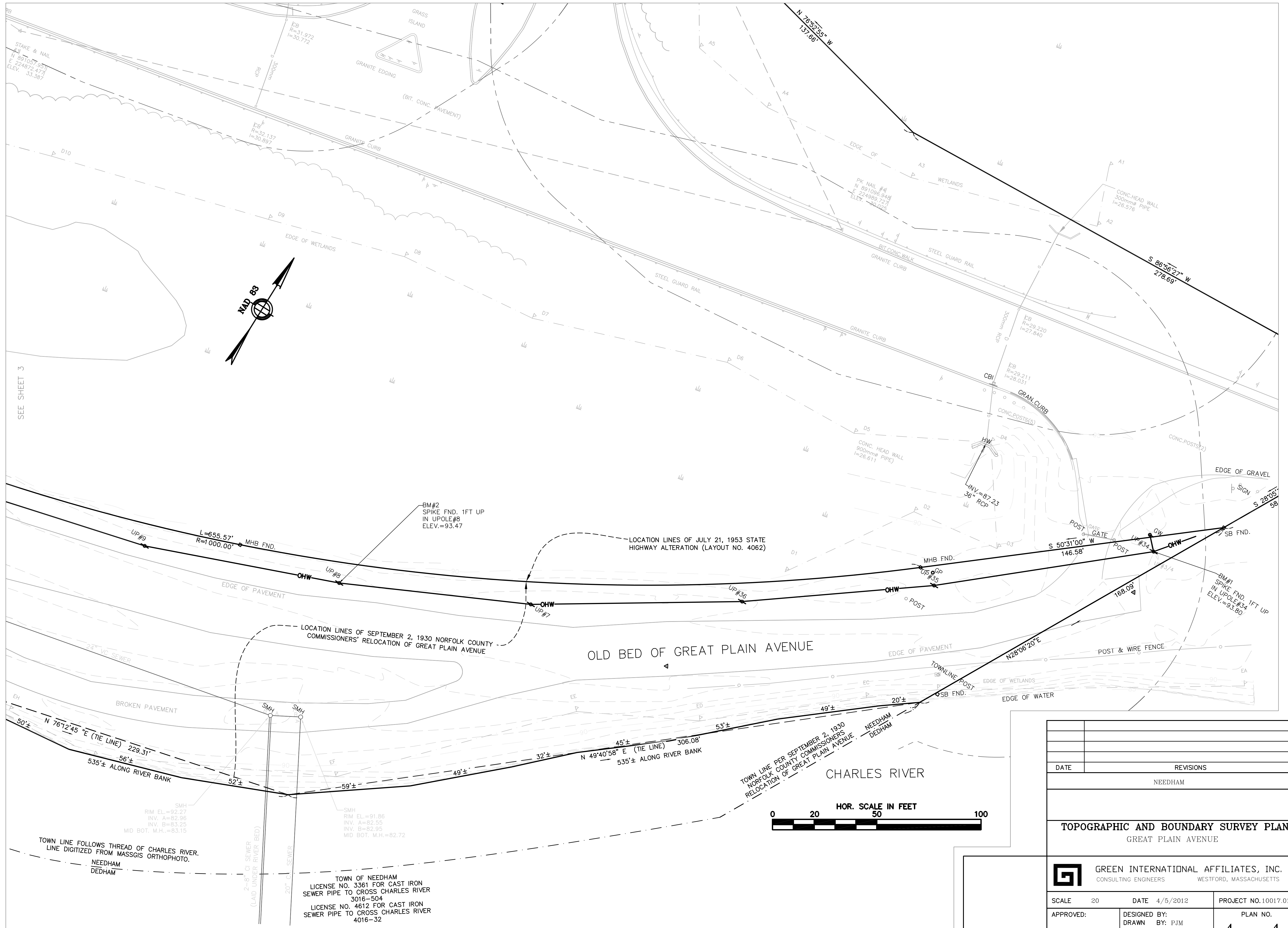
DATE	REVISIONS

NEEDHAM

TOPOGRAPHIC AND BOUNDARY SURVEY PLAN
GREAT PLAIN AVENUE

 **GREEN INTERNATIONAL AFFILIATES, INC.**
CONSULTING ENGINEERS WESTFORD, MASSACHUSETTS

SCALE 20	DATE 4/5/2012	PROJECT NO. 10017.016
APPROVED: _____	DESIGNED BY: _____	PLAN NO. _____
	DRAWN BY: PJM	
	CHECKED BY: PAL	

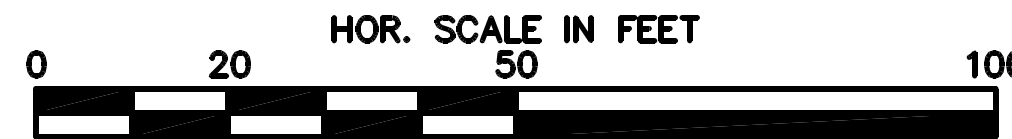


DATE	REVISIONS
	NEEDHAM
TOPOGRAPHIC AND BOUNDARY SURVEY PLAN	
GREAT PLAIN AVENUE	

 GREEN INTERNATIONAL AFFILIATES, INC. CONSULTING ENGINEERS WESTFORD, MASSACHUSETTS		
SCALE 20	DATE 4/5/2012	PROJECT NO. 10017.016
APPROVED: _____	DESIGNED BY: _____	PLAN NO.
	DRAWN BY: PJM	4 OF 4
	CHECKED BY: PAL	

TOWN OF NEEDHAM
 LICENSE NO. 3361 FOR CAST IRON
 SEWER PIPE TO CROSS CHARLES RIVER
 3016-504
 LICENSE NO. 4612 FOR CAST IRON
 SEWER PIPE TO CROSS CHARLES RIVER
 4016-32

TOWN LINE FOLLOWS THREAD OF CHARLES RIVER.
 LINE DIGITIZED FROM MASSGIS ORTHOPHOTO.
 NEEDHAM
 DEDHAM



SMH
 RIM EL.=92.27
 INV. A=82.96
 INV. B=83.25
 MID BOT. M.H.=83.15

SMH
 RIM EL.=91.86
 INV. A=82.55
 INV. B=82.95
 MID BOT. M.H.=82.72

2'-8" CI SEWER
 (LAID UNDER RIVER BED)
 20" C SEWER

TOWN LINE PER SEPTEMBER 2, 1930
 NORFOLK COUNTY COMMISSIONERS'
 RELOCATION OF GREAT PLAIN AVENUE
 NEEDHAM
 DEDHAM

CHARLES RIVER

OLD BED OF GREAT PLAIN AVENUE

LOCATION LINES OF SEPTEMBER 2, 1930 NORFOLK COUNTY
 COMMISSIONERS' RELOCATION OF GREAT PLAIN AVENUE

LOCATION LINES OF JULY 21, 1953 STATE
 HIGHWAY ALTERATION (LAYOUT NO. 4062)

BM#2
 SPIKE FND. 1FT UP
 IN UPOLE#8
 ELEV.=93.47

BM#1
 SPIKE FND. 1FT UP
 IN UPOLE#34
 ELEV.=93.90

SEE SHEET 3

